

Catalog No. BN40241R

Rabbit Anti-phospho-PIK3 gamma (Thr1024) Polyclonal Antibody

DATASHEET

Host:Rabbit

Target Protein:phospho-PIK3 gamma (Thr1024)

IR:Immunogen Range:HH(p-T)NL

Clonality:Polyclonal

Isotype:IgG

Entrez Gene:[5294](#)

Swiss Prot:[P48736](#)

Source:KLH conjugated synthesised phosphopeptide derived from human PIK3 gamma around the phosphorylation site of Thr1024:HH(p-T)NL

Purification:affinity purified by Protein A

Storage:0.01M TBS(pH7.4) with 1% BSA, 0.03% Proclin300 and 50% Glycerol. Shipped at 4℃. Store at -20 ℃ for one year. Avoid repeated freeze/thaw cycles.

Background:This gene encodes a protein that belongs to the pi3/pi4-kinase family of proteins. The gene product is an enzyme that phosphorylates phosphoinositides on the 3-hydroxyl group of the inositol ring. It is an important modulator of extracellular signals, including those elicited by E-cadherin-mediated cell-cell adhesion, which plays an important role in maintenance of the structural and functional integrity of epithelia. In addition to its role in promoting assembly of adherens junctions, the protein is thought to play a pivotal role in the regulation of cytotoxicity in NK cells. The gene is located in a commonly deleted segment of chromosome 7 previously identified in myeloid leukemias. [provided by RefSeq, Jul 2008].

Concentration:1mg/ml

Applications:WB(1:500-2000)

ELISA(1:5000-10000)

IHC-P(1:100-500)

IHC-F(1:100-500)

ICC(1:100-500)

IF(1:100-500)

Cross Reactive Species:Human

Mouse

Rat

Chicken

Dog

Pig

Cow

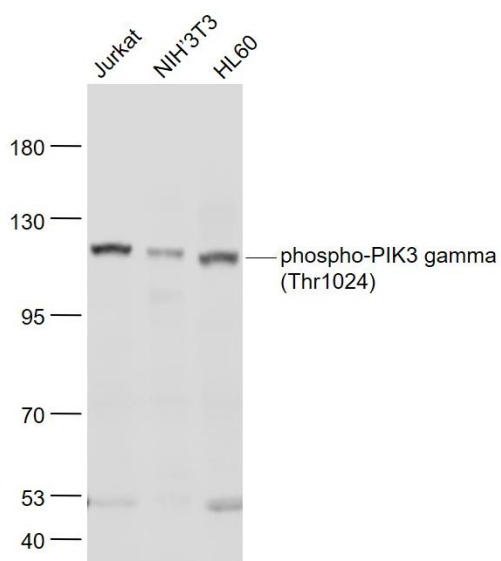
Horse

Rabbit

Sheep

For research use only. Not intended for diagnostic or therapeutic use.

VALIDATION IMAGES



Sample:

Jurkat(Human) Cell Lysate at 30 ug

NIH/3T3(Mouse) Cell Lysate at 30 ug

HL60(Human) Cell Lysate at 30 ug

Primary: Anti- phospho-PIK3 gamma (Thr1024) at 1/1000 dilution

Secondary: IRDye800CW Goat Anti-Rabbit IgG at 1/20000 dilution

Predicted band size: 121 kD

Observed band size: 121 kD